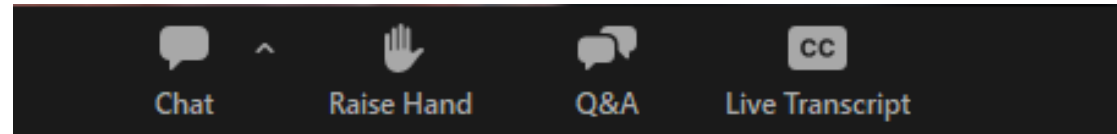




# SDSU/UC San Diego Joint Doctoral Program in Clinical Psychology

Program Overview

# Webinar Features



- Chat:** This feature has been disabled for today's webinar. We will be using the Q&A function instead.
- Raise Hand:** Please post all questions in the Q&A.
- Q&A:** You can post questions here.
- Live Transcript:** Click this option to turn on the live transcription feature.

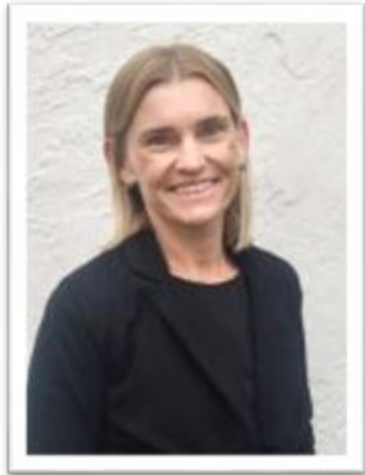
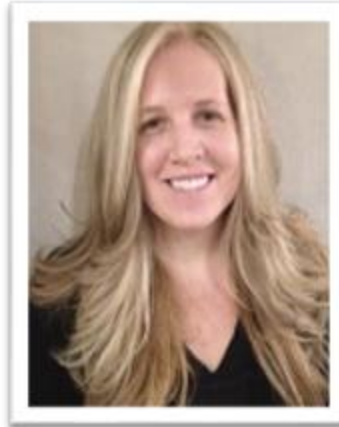


# Greetings from San Diego!





# Welcome from Program Leaders



# Program Administration Team



Program Coordinator  
(SDSU)

- Lynsey Miller



Program Coordinator  
(UC San Diego)

- Kate Gutierrez



SDSU Psychology Clinic  
Coordinator

- Emon Downhour



# Clinical Science Program Goal

- Provide outstanding education and training **to scientifically oriented research professionals**, who will subsequently make significant contributions to the field of clinical psychology in their areas of specialization.



# A Little History

- Founded in 1985
- SDSU Psychology (academic psychology) + UC San Diego Psychiatry (medical school)
- First accredited by the American Psychological Association (APA) in 1990
- Continuously accredited through 2024

PROPOSAL FOR A JOINT DOCTORAL PROGRAM

A PH.D. IN CLINICAL PSYCHOLOGY

between

DEPARTMENT OF PSYCHIATRY

UNIVERSITY OF CALIFORNIA, SAN DIEGO SCHOOL OF MEDICINE

and

DEPARTMENT OF PSYCHOLOGY

SAN DIEGO STATE UNIVERSITY

March 1984

Joint Ph.D. Conference Committee:

UCSD

I. Grant, M.D.\*  
E. Kremer, Ph.D.  
A. Lein, M.D., Ph.D.  
D. Lapidus, Ph.D.  
N. Penn, Ph.D.  
G. Reynolds, Ph.D.  
R. Ruff, Ph.D.  
L. Squire, Ph.D.  
L. Storms, Ph.D.  
P. Tallal, Ph.D.

SDSU

A. Litrownik, Ph.D.\*\*  
R. Kaplan, Ph.D.  
R. Schulte, Ph.D.

\*Conference Committee Chair &  
Contact Person, UCSD:  
Psychiatry (M-003)  
UCSD School of Medicine  
La Jolla, CA 92093

\*\*Contact Person, SDSU:  
Department of Psychology  
San Diego State University  
San Diego, CA 92182-0350



# Joint Program Administration

## Co-Directors

- Vanessa Malcarne, SDSU
- Lauren Brookman-Frazeo, UC San Diego

## Associate Co-Directors

- V. Robin Weersing, SDSU
- Tamara Wall, UC San Diego

## “Track” Leaders

- **Behavioral Medicine (BMed)**
  - Kristen Wells, SDSU
  - Cinnamon Bloss, UC San Diego
- **Experimental Psychopathology (EP)**
  - May Yeh, SDSU
  - Charlie Taylor, UC San Diego
- **Neuropsychology (NP)**
  - Sarah Mattson, SDSU
  - David Moore, UC San Diego



# Capitalizing on Resources of a Joint Program

- **Department Rankings**

- SDSU's Psychology Department was ranked #11 nationally in NIH funding to Departments of Psychology (\$9.488 million); it was ranked #1 in California compared to Departments of Psychology at all other private/public universities in the state.
- UC San Diego's Department of Psychiatry was ranked #3 nationally in NIH funding to Departments of Psychiatry (\$61.188 million). Core JDP faculty ranked in the in the top 100 NIH-funded researchers in the country in Departments of Psychiatry

- **Faculty**

- Total number of faculty: 178
- Number of core faculty: 66
- Number of SDSU core faculty: 26
- Number of UCSD core faculty: 40

# Collaboration Through Research Centers & Training Programs

## Research Centers

- HealthLINK (NIMHHD)
- Child & Adolescent Services Research Center
- IN STEP Children's Mental Health Research Center (NIMH P50)
- South Bay Latino Research Center
- Center for Medicinal Cannabis Research (CMCR)
- Eating Disorders Treatment and Research Program
- HIV Neurobehavioral Research Program (HNRP)
- SDSU Imaging Center
- Center for Autism & Developmental Disorders
- Institute for Behavioral & Community Health
- Center for Clinical & Cognitive Neuroscience
- Center for Research on Sexuality & Sexual Health
- Center for Behavioral Teratology
- Center for Research on Math & Science Education
- Dissemination and Implementation Science Center (DISC)

## NIH-Funded T32 Training Programs

- Alcohol Research in the Science/Practitioner Model (NIAAA)
- Geriatric 4Mental Health (NIMH)
- Training in Research on Addictions in Interdisciplinary NeuroAIDS (TRAIN) (NIDA)
- Advanced Data Analytics for Behavioral and Social Sciences
- Integrated Cardiovascular Epidemiology

## HRSA-Funding Interdisciplinary Training Program

- San Diego Leadership Education in Neurodevelopmental and Related Disabilities (LEND)

# Capitalizing on Resources of a Joint Program: UC San Diego Department of Psychiatry

## Our Mission

Our mission is to advance and transform behavioral health through groundbreaking research, compassionate patient care, and renowned education.

## Our Vision

Our vision is to revolutionize mental healthcare by empowering individuals to access transformative care without barriers or stigma.

## Our Values

Our shared values are to drive innovation, nurture an inclusive environment, and deliver service excellence.

- 27 Research Centers
- 30 formal training programs (350 Trainees)
- Clinical services through UC San Diego Health, VASDHS, and Rady Children's

*Opportunity for interdisciplinary training through advanced practicum clinical rotations at VASDHS, UC San Diego Health, and Rady Children's Hospital and through research labs and centers.*

# Capitalizing on Resources of a Joint Program: SDSU Department of Psychology

- University Designations
  - Federally designated Hispanic Serving Institution (HSI)
  - Asian American Native American Pacific Islander-Serving Institution (AANAPI)
- Opportunities for teaching and mentoring of MA, MS, and undergraduate students
- MS/MA Psychology Programs
  - Physical/Mental Health; Quantitative Methods; I/O; Behavioral & Cognitive Neuroscience, Cognitive, Developmental, Social
- LGBTQ+ Studies



# Key Elements of the Program

- Mentored research experience
  - second-year project
  - dissertation
- Guidance committee
- Coursework
- Proseminars
- Practicum training (starting 2nd year)
- Comprehensive exams
- APA-accredited clinical internship
- Optional:
  - Quantitative emphasis
  - Child & Adolescent Psychopathology emphasis
  - LEND (Leadership Education in Neurodevelopmental and Related Disabilities)
  - Opportunities to teach or supervise

# Mentored Research Experience

- Role of mentor
  - Provide regular research mentoring and serves as dissertation chair
  - Provide academic mentoring and evaluation and serves as chair of guidance committee
  - Provide opportunities for research experience and products in their lab for 20 hours per week
  - Fund student according to university policies for 5 years

# Mentored Research Experience continued

- Training provided by:
  - Identified faculty mentor(s)
  - Local collaborators (academic, community)
  - Research centers
  - National and international collaborators
  - Lots of interest in/attention to diversity/culture
- Program requirements:
  - Second-year project
  - Dissertation (options: traditional, 3-paper)
- Program goals/expectations:
  - Lots of publications, presentations, and grants!

# Guidance Committee

- Made up of 3 faculty members
  - At least 1 representative of each university
  - At least 1 of whom is clinically trained
- Committee meets annually and as needed
- Oversees second-year project



# Coursework

- Research Methods & Statistical Analysis
- Assessment
- Psychopathology & Interventions
- History & Ethics
- Cultural/Diversity
- Cognitive/Affective & Social/Developmental
- Physiological or Mind, Brain, & Behavior I
- Mind, Brain, & Behavior II (Psychiatry)
- Proseminars . . .

# Proseminars

- Behavioral Medicine (2 semesters)
  - Assessment & Intervention
  - Systematic Review; Grant Proposal
- Experimental Psychopathology (2 semesters)
  - Research Methods (Grant Proposal)
  - Developmental Psychopathology (Systematic Review)
- Neuropsychology (3 quarters)
  - Assessment of Neuropsychological Domains
  - Assessment of Neuropsychological Functioning in Specific Disorders
  - Clinical Interpretation of Neuropsychological Assessment Results

# Clinical Training – SDSU Psychology Clinic

- Training facility for JDP students working under the supervision of licensed SDSU and UC San Diego faculty.
  - Colby Chlebowski (Director)
- Supervision consists of live observation or digital recording of sessions.
- All 2nd year JDP students complete year-long practicum; advanced students provide peer supervision.
- Community serving clinic with sliding scale
- Specializes in the delivery of evidence-based services for wide range of presenting problems
- Services
  - Individual & group therapy
  - Child & family therapy
  - Evaluation & testing for adults and children



# Advanced Practicum Training Sites

- **SDSU**
  - SDSU Psychology Clinic - Peer supervision
  - SDSU Psychology Clinic – Child Assessment
  - Center for Understanding and Treating Anxiety
  - Center for Autism and Related Disorders
- **VA San Diego Healthcare System**
  - Alcohol and Drug Treatment Program (ADTP)
  - Center Of Recovery Education (CORE)
  - Cognitive Rehabilitation Clinic
  - Community Living Center
  - Family Mental Health Program
  - General Mental Health (BHIP) - Mission Valley
  - Inpatient Psychology Services
  - Mission Valley VA Outpatient Clinic, Primary Care
  - Mood Disorders Program
  - Neuromodulation Clinic
- Neuropsychological Assessment Unit
- Oceanside Community Based Outpatient Clinic
- Outpatient Gero Clinic
- Polytrauma and Inpatient Psychology Services
- PTSD Clinical Team
- SARRTP PTSD Track
- Substance Abuse/Mental Illness (SAMI) Clinic
- VISN 22 Telemental Health Center
- Weight Control Clinic/Diabetes/Chronic Pain
- **UC San Diego Health System**
  - Behavioral Sleep Medicine Clinic
  - CARE Early Psychosis Treatment Center
  - Center for Brain Health and Memory Disorders
  - Delis Neuropsychological Clinic
  - Neuropsychological Assessment Clinic in Oncology at the Radiation Oncology PET/CT Center
- Eating Disorders Program for Treatment and Research
- Center for Brain Health and Memory Disorders
- Memory Aging and Resilience Center
- Hillcrest Medical Center Consultation-Liaison Psychiatry Service
- Pain Psychology Service
- Cognitive Medicine Group
- Regional Burn Center
- Owen Clinic – HIV Care Clinic
- Neuropsychological Associates
- Village Family Health Center
- **Rady Children's Hospital**
  - Autism Discovery Institute
  - Developmental Evaluation Clinic
  - Medical Behavioral Unit
  - Outpatient Psychiatry Clinic



# Comprehensive Exams

- Major Area of Emphasis
  - Behavioral Medicine
  - Experimental Psychopathology
  - Neuropsychology
- Clinical Comprehensive Examination
  - Standardized Patient format
  - Integrated Report

# APA-accredited Clinical Internship (99% match rate over past 10 years)

- Rush University Medical Center
- University of Chicago Medicine
- Harvard Med School/Mass General
- Harvard Med School/McLean
- UCLA Semel Institute
- UC San Francisco
- U Kansas Medical Center
- Ohio State Cancer Center
- Emory University/Grady Health System
- Allegheny General Hospital
- U Colorado School of Medicine
- Children's Hospital/Stanford
- Texas Child Study Center
- Edmonton Consortium (U Alberta/Alberta Hospital)
- Charleston Consortium (MUSC & Johnson VA)
- Southwest Consortium (UNM, VA New Mexico, Indian HS)
- UC San Diego/VA San Diego
- U Alabama/VA Birmingham
- VA San Francisco
- VA Long Beach
- VA Palo Alto
- VA Durham
- VA Puget Sound
- VA South Texas
- VA Central Texas
- VA West LA
- VA Boston
- VA Salem
- VA Maryland/U MD School of Medicine
- Sharp Healthcare
- Henry Ford Health Sciences Center
- University of North Carolina School of Medicine
- Kennedy Krieger/Johns Hopkins

# Quantitative Emphasis

- Optional
- Required Coursework
  - Research Methods (2 courses - ANOVA, regression models)
  - Multivariate
- PLUS two additional courses
  - Multi-level modeling
  - Another doctoral-level course

# Child & Adolescent Psychopathology Emphasis

- Formal recognition of experience child/adolescent-focused students receive and expertise they develop
- 3 areas:
  - Research expertise
    - pubs, 2nd year project, dissertation, comp exam, grant
  - Clinical expertise
    - 2 practica
  - Specialized coursework (1)
    - Developmental Psychopathology
    - Leadership Education in Neurodevelopmental and Related Disabilities (LEND) Program

# SAN DIEGO LEND

Leadership Education in Neurodevelopmental  
and Related Disabilities

- Funded through a 5-year grant from the Health Resources and Services Administration (HRSA) and one of 60 LEND Programs Across the U.S.
- Interdisciplinary, year-long training program for graduate and postgraduate trainees, practicing professionals, family members, and autistic self-advocates to develop as leaders in autism and developmental disabilities (autism/DD).
- Focused on applying implementation science approaches to promote equity in access to evidence-based autism/DD services.
- Administered through the UC San Diego ACTRI Dissemination and Implementation Science Center and the Child and Adolescent Services Research Center in collaboration with San Diego State University and Rady Children's Hospital-San Diego.

# Opportunities to Teach or Supervise

- TA for doctoral classes
  - Assessment
  - Interventions
  - Quantitative Methods
  - Multivariate
- Instructor of record for undergraduate classes at SDSU and UC San Diego
- Clinic Coordinator
- Co-supervise in clinical practica



# Diversity

- Committees

- JDP JEDI Committee
- UCSD Psychiatry EDI Action Council
- SDSU Psychology Diversity Committee

- Practicum

- Diverse clientele/opportunities for training

- JDP Diversity Awards (totaling \$30,000)

- Research

- Faculty interests
  - <https://clinpsyc.sdsu.edu/clinical-and-research-training/>
- NIH-funded HealthLINK Transdisciplinary Health Disparities Research at SDSU (led by JDP faculty)
- South Bay Latino Research Center (led by JDP faculty)
- FUERTE hires in Latinx research
  - 2 new faculty

# Financial Support

- Basic Package (Mentor-based for 5 years)
  - Tuition & Fees
  - Health Insurance
  - Minimum compensation
    - 10/1/24-9/30/25 - \$34,564.50
  - Primary Sources of support
    - Employment
      - Research staff on mentor grants
      - Diversity Supplements on mentor grants
      - Teaching assistantships
    - Training Programs
      - NIH T32s
    - Fellowships
      - NIH F31s, NSFs
      - University & Foundation Fellowships
- Supplemental Support
  - Travel grants from both universities
  - University and other fees (e.g., Dissertation proposal, graduation, internship application)
  - Emergency funding from both universities
  - Student loans



# Student Service

Coptic Health  
Skype a Scientist  
IV LGBT Center  
Health Disparities Initiative (HDI)  
International Society for Traumatic Stress  
Psychiatry Education & Training Council  
The Trevor Project  
ElderHelp of San Diego  
International League Against Epilepsy  
APA Division 18 Serious Mental Illness  
Meedk ABCT Neurocognitive Therapies  
APA Div. 40/SCN Women in Neuropsychology  
Institute of Recruitment for Teachers  
Chronicon  
LGBTQ+ Journal Club  
Egyptian Ministry of Emigration  
Arthritis Foundation  
National Academy of Neuropsychology  
Make-a-Wish  
JEDI  
UCSD International Education Committee  
Society of Clinical Neuropsychology  
Promises2Kids  
San Diego LEND

Kearny High School  
Moishe House  
CFAR Health Equity Journal Club  
Finding Balance in Graduate School MH  
Asian Neuropsychology Association  
Alzheimer's Association  
Hanger Clinic  
Stanford Transfer Program  
Association for Neuropsychology Students  
Shanti Bhawan Foundation  
Association for Psychological Science  
Research Fight's Alzheimer's  
San Diego County Foster Youth



# Student Life





# Student Life



# JDP Admissions

- <https://psychology.sdsu.edu/doctoral/clinical/>
- Selection Process
- What We Consider for a Competitive Application
- How to Apply
- Faculty Mentorship
- Financial Support
- Admission FAQs
- Student Admissions, Outcome, and Other Data



# Application Deadlines & Process

- **November 1 (11:59 PM Eastern):** Supplemental Program Application Deadline
- **December 1:** Cal State Apply Application Deadline
- **Dec 15:** Deadline to Submit Transcripts to SDSU
- **Mid-January:** Interview Offers Extended
- **February 3 & 4:** Two-Day **ONLINE** Interview Process

# Holistic Review: What We Consider for a Competitive Application

- Research Experience
- Preparatory Coursework
- Fit with a Faculty Member's Interests
- GPA
- Statement of Purpose
- Diversity Essay
- Letters of Recommendation
  
- *GREs will NOT be considered*

# Thanks for your attention!

For questions, please email the program at: [psycjdp@sdsu.edu](mailto:psycjdp@sdsu.edu)

